

## Appendix E

# The Walk Time Survey

*Written for Campion Concerns by Natalie Stephenson & David Pavett, 28th December 2006*

**Summary.** *This report, by Millard Consulting Engineers, was designed to undermine the view, accepted in the Millard Traffic Analysis, that it takes 17 minutes to walk to Hounslow Town Centre. To achieve this, agreed standards have been ignored. Using a “bespoke” approach, they succeed only in reducing this time to 13.5 minutes. Even so, their results do not stand up to examination. The distance to the outer limit of the town centre is 1200 m (15 min walk time). That to the focus of the shopping centre is 1900 m ( 23.75 min walk time). This confirms Campion's suburban status.*

It is plain that the Walk Time Survey by Millard Consulting Engineers was written in order to achieve Try Homes' objective of undermining the suburban status of the Campion House site. This is difficult to do since the area meets the the various criteria required for suburban status (poor transport, more than 10 minutes walk from town centre, nature of built environment).

To overcome this evident difficulty the author(s) of the report have ignored the generally agreed standard for walk time, namely, that 1 minute is required for 80m. This figure is a standard which was chosen to represent an average walk time. It is obvious that some people can walk 80 m in less than 1 minute and that others would take more. That is the point of using an averaging standard. It is also the standard used by TfL<sup>1</sup> for calculating PTALs. The Try Homes' case against the agreed suburban status of the site and its PTAL rating is therefore not based on using accepted standards. It is, quite simply, an attempt to move the goal posts.

Planning would become completely arbitrary if it were acceptable that interest groups could ignore agreed standards and invent their own measures for quantifiable issues. Millard Consulting Engineers admit that 80m per minute figure “... is widely used to estimate walk times to facilities such as bus stops and aims to provide a typical average value”.

Instead of using this standard Millard Consulting Engineers have chosen to provide what they call “real world data” by using an observer who was “young, fit and unencumbered by baggage”. The claim is made that this observer walked at “an unhurried, slower than normal pace”.

The results of various walks fill 13 tables (over half the report) with the resulting data. We cannot see that it has any bearing on the problem under discussion. It would appear that the aim is to impress the reader by the quantity of the evidence rather than by its quality.

We have an agreed standard walk speed. All that is needed is an accurate measure of the distances involved. Once the distances are established then times are calculated with

$$\text{walk time (minutes)} = \frac{\text{distance (metres)}}{80}$$

Using this simple and agreed method we obtain the following results.

<i>Location</i>	<i>Distance (m)</i>	<i>Walk time (min)</i>
Boundary of town centre (Bingo Hall) which is still a significant distance from the main shopping area	1200	15
Focus of main shopping area (Treaty Centre)	1900	23.75

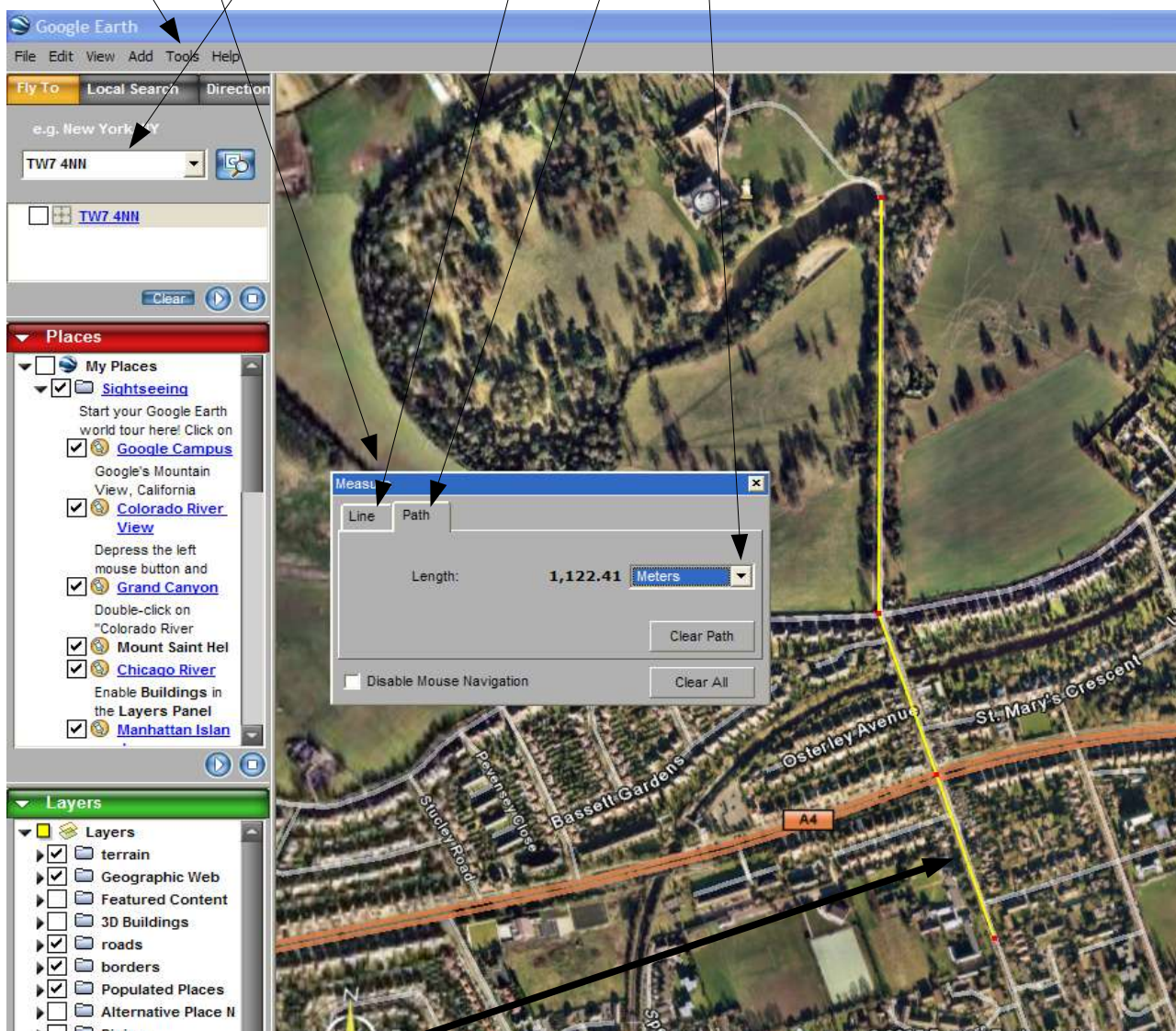
*These simple results, obtained using the agreed standard, demonstrate beyond reasonable doubt that the walk-time from the Campion site to the town centre is significantly more than 10 minutes. The so-called 'real world data' in the Millard report serves only to try to obscure these basic facts.*

<sup>1</sup> **Transport assessment best practice**, *Guidance document*, Transport for London, May 2006

# Walking Distances – Just For The Record

Everyone can check walking distances for themselves by using Google Earth<sup>2</sup> Tools. To do this open Google Earth and enter a post code for the area you want to make measurements on. Then go to the **Tools** menu and select **Measure** from the menu list that appears. This will produce the dialogue box shown. Use the dialogue box to select the units you want to measure in.

Select **Line** or **Path** according to whether you find the distance between two points (Line) or you want to find the total distance between a series of points.



In this case the yellow line show the walking path from the Campion site to the public access part of Osterley park. It is easy to see that the distance is 1,112 metres and not under 400 metres as claimed by Try Homes.

<sup>2</sup> Google Earth is free software obtainable from <http://earth.google.com/>